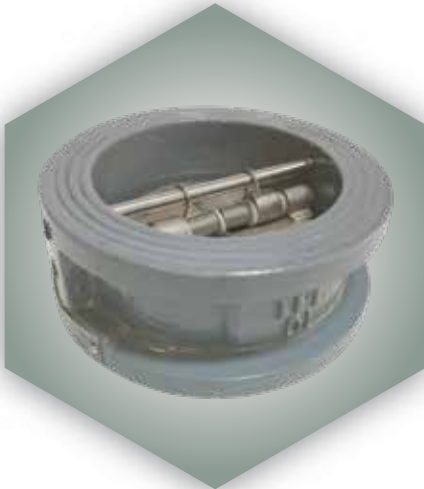
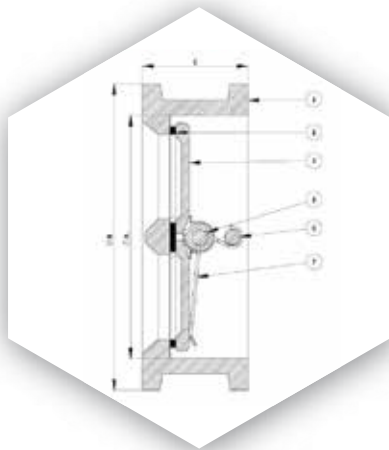


### DI CHECK VALVE DOUBLE DOOR WAFER (CVW16)



### DIMENSIONAL DRAWINGS



### DIMENSIONS & WEIGHTS

Size	A	B	C	Weight (kg)
65MM	81	109	54	2.80
80MM	99	130	57	3.20
100MM	116	160	64	4.60
125MM	143	194	70	7.40
150MM	170	214	76	8.50
200MM	219	270	95	16.10
250MM	273	328	108	25.50
300MM	324	378	143	39.50
305MM	360	447	184	72.50
400MM	406	511	191	94.50
450MM	457	546	203	120
500MM	508	603	213	150
600MM	610	714	222	210

### FEATURES & BENEFITS

- Permit flows in one direction and close automatically if flow reverse size.
- Low weight and short laying length saves initial cost, requires less space, and is easier to install.
- Independent springs provide quick-closing, non-slam shut off for reduced water hammer potential.
- Lightweight, spring-loaded discs have low cracking pressure for energy efficient operation.
- 200 Micron Fusion Bonded Epoxy Powder Coated internal and external ensured barrier to corrosive chemicals, moisture and humid air.
- Featuring dual lightweight discs, responsive independent springs and a durable resilient seat for reliable flow activated operation with tight sealing and reduced water hammer potential.
- EPDM rubber seat to facilitate quiet/Silent operations and improve disc seating without any leakage.

### MATERIAL SPECIFICATION

Part No.	Part Name	Material
1	BODY	DUCTILE IRON : BS EN 1563 EN-JS 1050
2	PLATES/DISC	NICKEL PLATED DUCTILE IRON : BS EN 1563 EN-JS1050
3	SEAT	RUBBER : EPDM
4	BODY/PLATE/SPRING BEARING	NYLON/PTFE : BS 6564
5	HINGLE PIN	STAINLESS STEEL : BS EN 10088-3 GR.1 4301
6	STOP PIN	STAINLESS STEEL : BS EN 10088-3 GR.1 4301
7	TORISION SPRING	STAINLESS STEEL : BS EN 10088-3 GR.1 4308
8	HINGE PIN RETAINERS	STAINLESS STEEL : BS EN 10088-3 GR.1 4301
9	PACKING	RUBBER : EPDM
10	EYE BOLT	STEEL

### PRESSURE / TEMPERATURE RATING

Pressure Rating	16 bar
Temperature	-10 to 120 °C

### TEST PRESSURES

Shell	24 bar
Seat	17.6 bar

### SPECIFICATION

- Double door wafer pattern with spring assisted closure.
- Elastomer seat vulcanized to the body casting to ensure extended seal life.
- Suitable for mounting in horizontal and vertical pipelines.
- Ideal for fitting between flanges to BS EN 1092-2.
- Face to Face: BS EN558.
- Testing standard: BS EN 12266-2.

TFL Valves Quality Policy Is Complete Satisfaction Of Customers. According To That We Have Selected QUALITY As A Strategic factor in application to all our organization. Our purpose is to reinforce competitiveness, to ensure customer satisfaction, to improve process related with product quality and guarantee accomplishment of quality requirements.